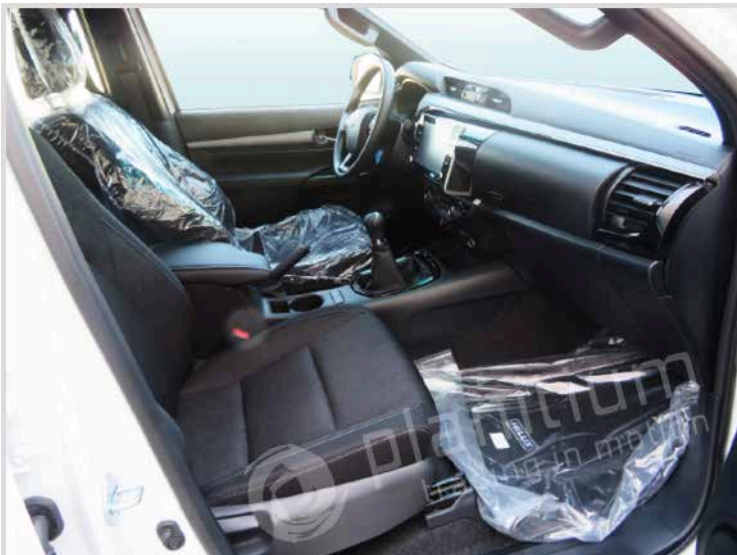


# TOYOTA HILUX 2.8 TDSL MAN DOUBLE CAB 4X4 ADVENTURE V ZT MY 2023



<b>BASE MODEL</b>	
MAKE	TOYOTA
MODEL NAME	HILUX 4WD D/C 2.8L
GRADE	HILUX D/C 4WD 2.8 DSL ADVENTURE-V
KATASHIKI	GUN126L-DTFHXV
BODY TYPE	PICKUP

<b>DIMENSIONS</b>	
DIMENSIONS Lx Wx H mm	5325 X 1900 X 1815
DECK DIMENSIONS Lx Wx H mm	1520 X 1575 X 480
WHEEL BASE mm	3085
GROUND CLEARANCE mm	310
KERB WEIGHT (Kgs)	2015-2110
GROSS VEHICLE WEIGHT (Kgs)	2910
FUEL TANK CAPACITY Ltrs.	80

<b>ENGINE &amp; DRIVETRAIN</b>	
DISPLACEMENT cc	2755
HP SAE (Net)	201
TORQUE KgM SAE (Net)	51
TYPE	4 CYL,16V, DOHC
FUEL SYSTEM	Efi W/ COMMON RAIL& INTERCOOLER (EURO4 W/OBD)
FUEL TYPE	DIESEL
CATALYTIC CONVERTER	WITH
T/M	6-SPEED M/T
4WD OPTIONS	PART-TIME
DIFF. OPTION	REAR DIFF LOCK W/ AUTO DISCONNECT DIFFERENTIAL(ADD)

<b>INTERIOR</b>	
CONSOLE BOX	CONSOLE BOX WITH SOFT LID+SILVER+REGISTER+SEPARATOR
Fr. SEAT BELT	3PELRx2 W/PT & FL
VERTICAL SEAT ADJUSTER	WITH
Rr. SEAT BELT	3PELRx2+2PNRx1
HEAD REST	WITH (2 No.)
CENTRE ARMREST	WITH
DIGITAL CLOCK	WITH
INNER REAR VIEW MIRROR	DAY/NIGHT
SEAT MATERIAL	DARK GRAY FABRIC <ADVENTURE DESIGN>
SEATING CAPACITY	5
SUN VISOR	D(W/HOLDER) + P(W/MIRROR & LID)
TACHOMETER	WITH

<b>EXTERIOR</b>	
BUMPER: Fr. & Rr.	COLOUR KEYED /STEEL STEP PAINTED<ADVENTURE>
DOOR HANDLES	BLACK<ADVENTURE>
MUD GUARDS: Fr. & Rr.	FRONT* + REAR
HIGH MOUNT STOP LAMP	LED
OUTER MIRROR: COLOUR KEYED	BLACK WITH TURN SIGNAL<ADVENTURE> + WELCOME LIGHT
POWER	WITH
SIDE STEP	WITH
SIDE STRIPE *	WITH( NEW DESIGN ADVENTURE) *
WINDSHIELD GLASS	GREEN LAMINATED W/TOP SHADE

<b>TIRE</b>	
TIRE SIZE	265 / 60 R18 ALL TERRAIN <ADVENTURE>
WHEEL CAP	ALLOY W/SPARE TIRE ALLOY
<b>STEERING</b>	
POWER/TILT	WITH/WITH & TELESCOPIC (With Manual Electric Lock)
<b>BRAKE</b>	
FRONT/REAR	V.DISC/DRUM
<b>SUSPENSION</b>	
FRONT	DOUBLE WISHBONE
REAR	LEAF SPRING
<b>SAFETY</b>	
ABS+EBD+BA	WITH
AIR BAG	D + P + KNEE (DRIVER)
VSC+HILLSTART ASSIST CONTROL (HAC) + TRAILER SWAY CONTROL (TSC)	WITH
DOWNHILL ASSIST (DAC)+LIMITED SLIP DIFFERENTIAL (LSD)	WITH

<b>ELECTRICAL</b>	
AC/HEATER	WITH (AUTO)+REAR DUCT / WITH
ANTENNA	SHORT POLE
AUDIO	8" DA WITH USB/BT,6 SPK
KEYLESS ENTRY	SMART + PUSH START
METER ILLUMINATION CONTROL	WITH
POWER DOOR LOCK	WITH
POWER WINDOW	WITH
RADIO	AM/FM
WIPER FR	ADJ. INTERMITTENT: MIST

<b>OTHERS</b>	
LIGHT CONTROL SYSTEM	W/ FOLLOW ME HOME
ANTI-THEFT IMMOBILISER	WITH
ADVENTURE DOME BADGE *	WITH*
BACK VIEW CAMERA	WITH + PVM
BADGE	ADVENTURE EMBLEM (OE)
COOL GLOVE BOX	WITH
CRUISE CONTROL	WITH
DOOR COURTESY LAMP	W/ REFLECTOR
ECO/POWER DRIVE MODE	WITH + IMT
FLOOR MAT	WITH
FRONT FOG LAMP	WITH(LED)<ADVENTURE>
HEADLAMP	LED W/ AUTO LEVELLING<ADVENTURE>
MUFFLER CUTTER (OE)	WITH
MULTI INFO DISPLAY	W/ TFT TYPE
RADIATOR GRILLE	BLACK + CHROME <ADVENTURE DESIGN>
REAR FOG LAMP	WITH
REAR WINDOW	SLIDE TYPE
SAFETY KIT *	WITH *
SHIFT LEVER KNOB	LEATHER W/ BLACK ACCENTS
STEERING WHEEL	URETHANE W/ CONTROL SWITCHES, BLACK ACCENTS
DECK TYPE	A'DECK WITHOUT GUARD FRAME
TAILGATE LIFT ASSIST	WITH

ADVENTURE PACKAGE:Bumper/Grille/Overfender/Fog Lamp/18" Alloy/Deck Bar/Bedliner/Adventure Emblem/Sporty Seats/Black door Handles & Mirrors/Black Interior	WITH
HOOD LIFT ASSIST	WITH
IR CUT GLASS (FR+SIDE+RR)	WITH
TOYOTA SAFETY SENSE(RADAR CRUISE CONTROL+LANE DEPARTURE ALERT)	WITHOUT
SENSORS	FR2+RR4
TYRE PRESSURE MONITORING SYSTEM	WITH